

## EVO™ CONDENSING WATER HEATERS



Custom System **SOLUTIONS**

DOMESTIC HOT WATER (DHW)



Compact shipping, designed for easy rigging and fast, on-site assembly!

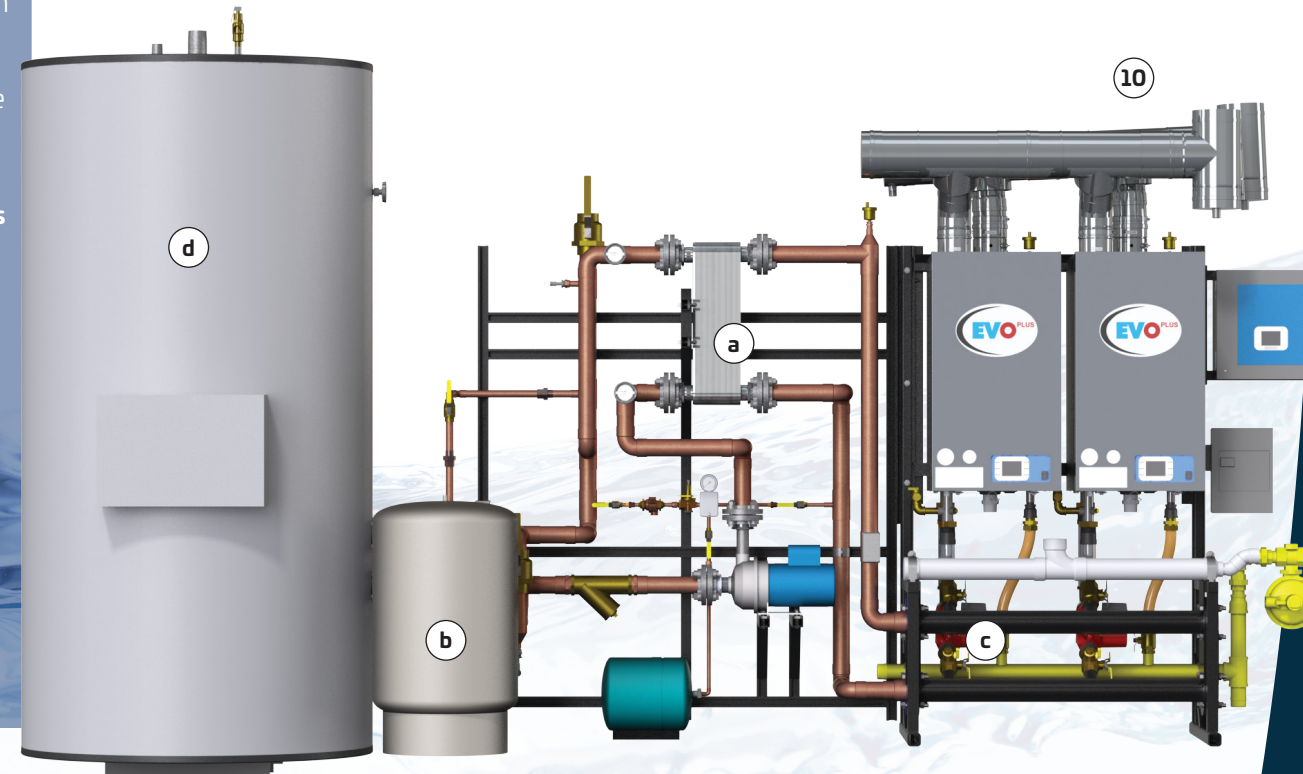
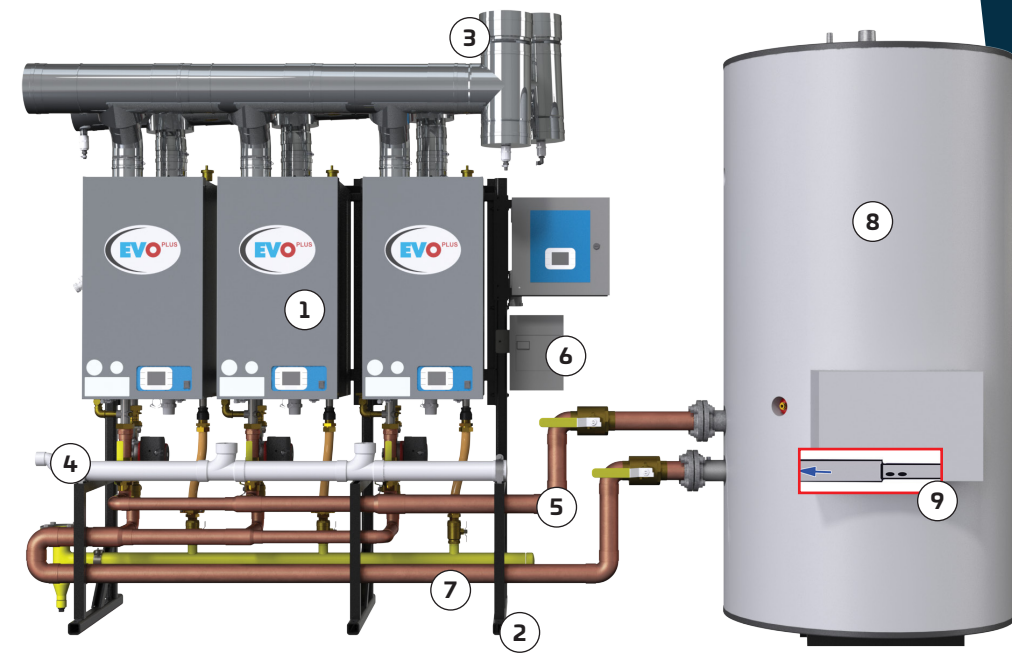
## Why use EVO™ Custom System Solutions?

# TO SIMPLIFY YOUR INSTALLATION!

Factory designed, engineered, and pre-fabricated for your project's unique specifications. Why waste days on-site when you can spend just minutes to set-up and start making system field connections? Take the guesswork and frustration out of your project and increase your profitability with **Custom System Solutions** from Hamilton Engineering.

Whether a single EVO water heater or twelve, our Custom System Solutions are designed and fabricated to meet your specifications. Substantial product and component inventories and modular design concepts ensure quick turn around and delivery on your most complex projects. Our 24/7 factory support before, during, and after the sale, make this a complete package every time!

- Factory designed, engineered, and pre-fabricated to your specific project requirements
- Modular design for easy expansion
- Single source responsibility for the complete water heater system
- Simple and fast field assembly
- Extremely compact footprint
- Designed and built in conformance with ASHRAE standards
- ASTM Certified materials
- 2D or 3D CAD drawings available with every system



## FEATURES AND OPTIONS:

- 1 Hamilton EVO condensing water heaters with pumps
- 2 Seismic-rated mounting rack with leveling legs
- 3 Common venting for single combustion air and single flue CAT IV (can adapt to PVC)
- 4 Condensate neutralizer for single condensate drain
- 5 Gas manifold for single point gas connection, also available with gas pressure regulator
- 6 Heaters and pumps pre-wired for single point electrical connection
- 7 Pre-piped reverse return headers
- 8 Storage tanks available pre-piped in any size, insulated or bare
- 9 Cold Water Injection System (CWIS) maximizes heater efficiency by directing coldest water to the EVOs, increasing efficiency as much as 6% (see inset)
- 10 For poor water quality, pre-piped Indirect Domestic Hot Water (DHW) system with (a) single or double wall heat exchanger, (b) expansion tank, (c) circ pumps, (d) storage tank; package includes controls

## ADDITIONAL OPTIONS:

- BMS Gateways for BACnet, LonWorks, and Modbus
- UL 795 and CSA 3.4 certification
- Pre-piped zone manifold with zone pumps or control valves
- Pre-wired zone controllers
- Skid mounting of complete system

These complete EVO water heater systems are customizable beyond the basic modular design, eliminating the potential for incorrect piping, wiring, or assembly. Single source responsibility for this complex portion of a plumbing system ensures trouble free start up and more efficient operation for years to come.



## WHY HAMILTON?

### INNOVATIVE CONDENSING TECHNOLOGY!

Hamilton's EVO line is engineered using technology developed and patented in Europe in 1992. To date, this technology has been installed in more than seven million facilities worldwide. Hamilton has combined the best of this technology with its years of experience in condensing equipment to design and develop a product line that broadens its applications and capacities, and eliminates many of the common mistakes made during installation.

### EVO™ CONDENSING WATER HEATERS

- **Maximum Efficiency**  
Up to 99.8% depending on incoming water temperature
- **Superior materials**  
All 316 L stainless steel heat exchanger
- **Longest Warranty in the Industry**  
10 year limited heat exchanger warranty
- **Modulating Burner**  
5:1 turndown ratio per burner adjusts to meet demand, further increasing efficiency while reducing cycling
- **Cascading Control**  
Up to 8 burners can communicate with each other to operate as one large system, up to 5,040 MBH, with a system turndown ration up to 40:1
- **Heating Control Configurations**  
The EVO product line has a multitude of native control configurations, all of which are possible without adding expensive boards or external control panels
- **BMS/DDC Interface**  
Remote enable/disable, remote alarm, 0-10 VDC, Modbus, BACnet, and LonWorks gateways



Heat Exchanger Coil



Modular Heat Exchangers

Model Sizes

136,000 / 180,000 / 199,999 BTUs  
300,000 / 399,999 / 630,000 BTUs

REPRESENTED BY



34000 AUTRY STREET, LIVONIA, MI 48150 | 800.968.5530  
hamiltonengineering.com | LIT91220 | REV 04/2021

