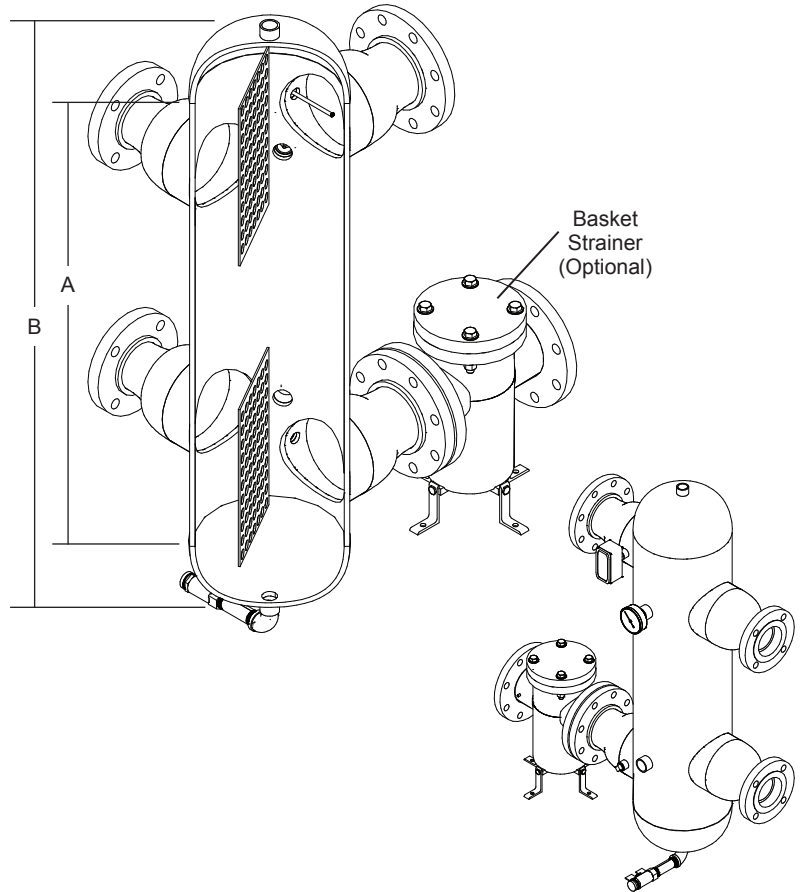


Hamilton System Separator Technical Information

Key Features

- Provides hydraulic separation
- Properly decouples primary boiler loop to secondary circuits
- Takes guesswork out of closely spaced tees
- Allows for proper temperature flow into zones without pump conflict
- Protects boiler from fluctuating pressures (starving boiler flow)
- Eliminates extra plumbing and crossover bridges, tees and balancing valves
- Pressure and flow separation
- Air separation
- Dirt separation
- Temperature sensor well (system outlet port)
- Built-in blow down valve
- Pipe materials are ASTM A53 Design Certified
- Fittings are ASTM A234 Design Certified
- Standard maximum working pressure 80 psi*
- Optional basket strainer can be equipped with magnetic inserts, ΔP gauge, and/or ΔP switch (can also be used for system flushing)



*Also available in this configuration

Optional Accessory Package includes:

- Drain Valve - 3/4" with cap • T&P Gauge • 3/4" Air Vent
- 1/2" Pressure Reducing Fill Valve • Expansion Tank Isolation Ball Valve

SYSTEM SEPARATOR PORT FLOWS AT <3 FPS AND AN INTERNAL FLOW RATE OF <0.5 FPS

Connection Size	Maximum Flow Rate (gpm) [†]	Body Diameter	A (weld seam to weld seam)	B (overall height)	Approximate Weight
2"	14	3"	30"	34"	50 lbs.
2"	29	4"	30"	35"	60 lbs.
3"	78	6"	36"	43"	117 lbs.
3"	112	8"	36"	44"	156 lbs.
3" Boiler 4" System	196	10"	36"	46"	210 lbs.
6"	270	10"	48"	60"	275 lbs.
6"	437	12"	48"	60"	385 lbs.
6" Boiler 8" System	775	16"	48"	62"	509 lbs.
6" Boiler 10" System	1223	18"	54"	70"	726 lbs.

Notes:

* Higher working pressure available upon request. Consult factory for details.

[†] Flow rate is the greatest of either boiler or system side.

• Overall "B" dimension is measured from the end of one cap to the end of the other. Couplers and valves are NOT included in the calculation.

•• Above sizes are stock items. Custom sizes available for larger flow rates and other connection sizes.

••• For more specific dimensional data, consult factory with project specifications and a CAD drawing will be provided.