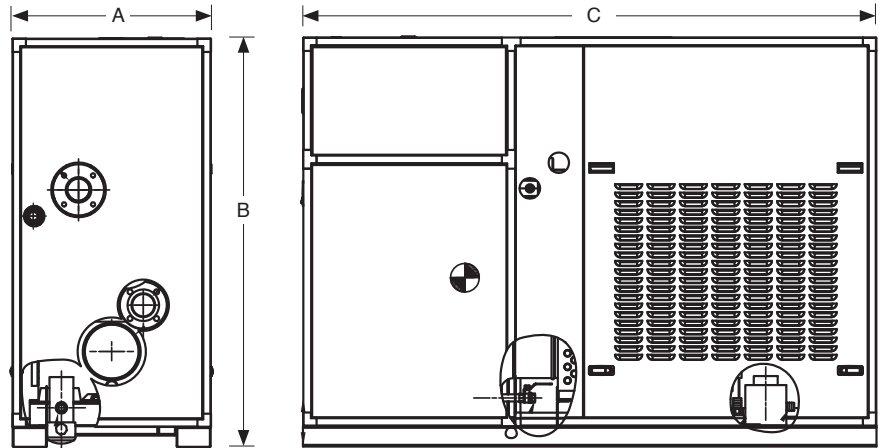


Hamilton 96 XL Technical Information

Standard Equipment

- Up to 96% efficient
- Copper 4-pass heat exchanger
- Stainless steel secondary heat exchanger
- Modulating temperature control mixing valve
- Variable speed blower
- UV flame detection
- FM/CSD-1 compliant gas train (subject to local codes)
- Mounted & wired flow switch
- Integral primary pump
- Full modulation 5:1
- No de-rate to 6000 ft.
- Sealed combustion/direct vent
- HeatNet control
- Gasketless heat exchanger assembly



Optional Equipment

- Cupro-nickel finned tubes
- BACnet or LonWorks interface module
- Freeze protection package
- Honeywell keyboard display module S7800
- Outdoor sensor with housing
- Outdoor installation

Model	Input MBTU/hr	Output MBTU/hr	GPH Recovery @ 80°FΔT	Inlet Air	Gas Conn.	Water Conn.	A	B	C	Weight
HX 2500	2,500	2,350	3,562	8"	1.5"	3"	29.0625"	55.5"	84"	2700 lbs.
HX 3000	3,000	2,820	4,231	8"	1.5"	3"	29.0625"	60"	84"	2900 lbs.
HX 3500	3,500	3,290	4,936	10"	2"	3"	29.0625"	64.5"	84"	3100 lbs.
HX 4000	4,000	3,760	5,642	10"	2"	3"	29.0625"	69"	84"	3200 lbs.

*Dimensions are approximate. Please consult factory before installation.

Model	Flue Vent		Common Vent Engineered Systems*
	Category IV Positive (up to 60°F)		
	UL Stainless	PVC/PP	
HX 2500	8"	8"	Common Vent Engineered Systems*
HX 3000	8"	8"	
HX 3500	10"	10"	
HX 4000	10"	10"	

*Diameters based on system design.

